

## DR CHATTERJEE'S DENTAL NEWSLETTER

MAY, 2025

123, 1ST FLOOR, ARCADIA, HIRANANDANI ESTATE, PATLIPADA,  
OFF GHODBUNDER ROAD, THANE (W), 400601  
9619001537

### FEATURED CASE: A NEW SMILE IN JUST ONE DAY! FULL-MOUTH IMPLANTS WITH IMMEDIATE EXTRACTION AND TEMPORARIES

This month, we're excited to share a transformative full-mouth rehabilitation we recently completed. Our patient, a 78 year old female, came in with severely compromised teeth, and in just two days, walked out with a beautiful set of temporary teeth and a renewed sense of confidence!

#### Case Highlights

● Patient Condition: Multiple decayed and infected teeth, difficulty chewing, uneven bite, missing teeth, low self-esteem.

Patient has a medical history of hypertension and diabetes.

● Procedure: Full-mouth extraction followed by placement of 12 implants (6 upper arch, 6 lower arch).

#### ● Timeline:

Extractions and implant placement done on the same day.

Immediate loading with screw-retained temporaries.

● Technology Used: CBCT planning, surgical guide, digital impressions.

"I really like my new smile and the transformation with my smile," said the patient.



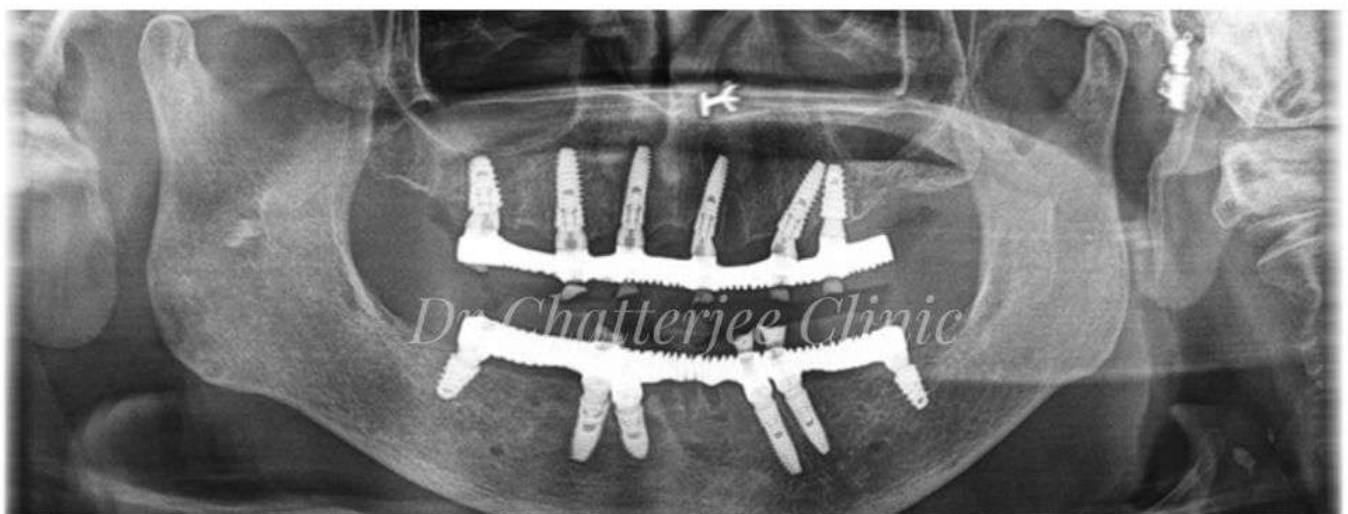


## What Are Immediate Temporaries?

After implants are placed, we attach a custom-made temporary bridge on the same day. This allows you to eat soft foods, speak clearly, and smile confidently during the healing phase.

### WANT TO KNOW IF YOU'RE A CANDIDATE?

- Book a consultation this month and get a complementary digital scan if you proceed with treatment.
- Book Appointment Now at [www.drchatterjeeclinic.com](http://www.drchatterjeeclinic.com) or Call us at 9619001537



## DENTAL TIP OF THE MONTH

"MAINTAIN YOUR IMPLANTS LIKE NATURAL TEETH."

USE A SOFT-BRISTLE BRUSH, FLOSS DAILY, AND VISIT FOR REGULAR CLEANINGS